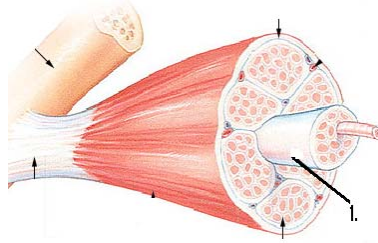


Practice Questions for Practical II, HA and P I Lab

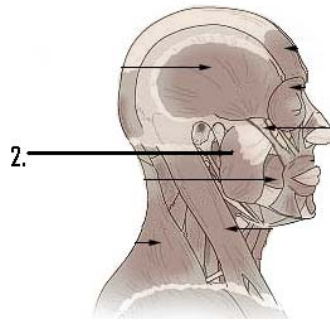
Ex. 14: 1. Identify the indicated structure.

- A. Sarcomere
- B. Myofibril
- C. Sarcomlemma
- D. Fascicle
- E. Endosysium



Ex 15: 2. Identify the indicated muscle.

- A. Masseter
- B. Temporalis
- C. Mentalis
- D. Platysma
- E. Trapezius

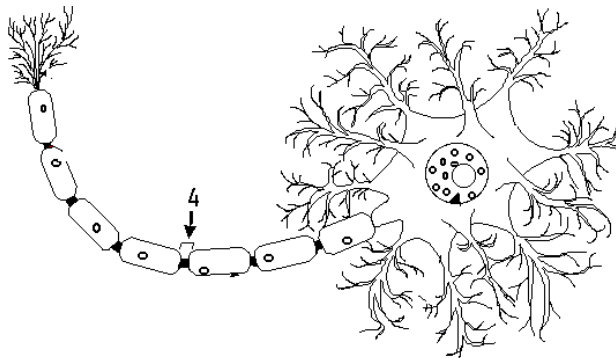


Ex 16A: 3. During the latent period, a muscle cell ____.

- A. is completely at rest
- B. begins contraction in response to a simple stimulus
- C. begins contraction but is countered by antagonistic action of other muscles
- D. undergoes important chemical and electrical changes prior to contraction
- E. none of these

Ex. 17: 4. Identify the indicated structure.

- A. Schwann Cell
- B. Node of Ranvier
- C. Dendrite
- D. Axon
- E. Myelin



Ex. 19: 4. The part of the brain that contains the thalamus, hypothalamus, infundibulum, and the pituitary gland is the

- A. brain stem
- B. mesocephalon

- C. diencephalon
- D. cerebellum
- E. none of the above

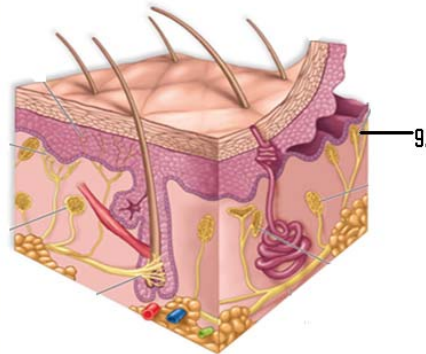
- Ex 21: 5. Mixed nerves are
- A. found in the brain
 - B. spinal nerves
 - C. carry both motor and sensory nerve fibers
 - D. both B and C
 - E. all of the above

6. Which plexus serves the lower abdominopelvic region and the anterior thigh?
- A. Brachial
 - B. Lumbar
 - C. Sacral
 - D. Cervical
 - E. Dorsal

- Ex. 22: 7. A stretch reflex
- A. is a somatic reflex
 - B. is a spinal reflex
 - C. maintains posture, balance, and locomotion
 - D. all of the above.
 - E. none of the above.

8. In the ipsilateral consensual reflex, what is the effector?
- A. the optic nerve
 - B. the olfactory nerve
 - C. the retina
 - D. the smooth muscle of the iris
 - E. the Orbicularis Oculi

- Ex 23: 9. Identify the indicated structure.
- A. Ruffini's corpuscle
 - B. Pacinian's corpuscle
 - C. Merkel's cell
 - D. Meissner's corpuscle
 - E. Free nerve ending



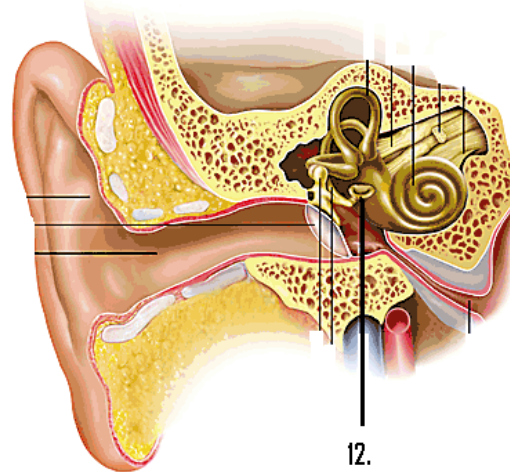
- Ex. 24: 10. The tapetum lucidum
- A. is the pigmented choroid coat
 - B. reflects light back into the eye
 - C. is clearly seen in the human eye
 - D. a and b
 - E. all of the above.

11. Which part of the nervous system consists of the cranial and spinal nerves, ganglia and sensory receptors?

- A. Autonomic
- B. Somatic
- C. Peripheral
- D. Central
- E. Parasympathetic

Ex 25: 12. Identify the indicated structure.

- A. Tympanic membrane
- B. Stapes
- C. Cochlea
- D. Malleus
- E. Incus



Ex. 26: 13. The taste cells depolarize sending a signal when a chemical solution contacts

- A. a basal cell
- B. a stereocilia
- C. an inner hair cell
- D. a glomeruli
- E. a gustatory hair