

Lab 6 Notes:

Digestive and Urogenital Systems

You will be closely following your lab manuals this week, although I may supply some helpful material.

Shark (pp. 153-174)

Read about opening the shark (pp. 153-155), and continue reading through p.174. Omit the respiratory system (pp. 166-168).

Be able to identify the following structures and their corresponding functions:

Body Cavities and Mesenteries (pp. 153-158)

Pleuroperitoneal cavity	Pericardial cavity
Greater omentum	

Digestive System (pp. 159-166)

Oral cavity	Pharynx
Teeth	Spiracle
Tongue	Internal gill slits
Esophagus	Liver
Stomach	Duodenum
Valvular intestine	Spiral valve
Rectum	Cloaca
Rectal gland	Spleen
Pancreas	Bile duct
Gallbladder	Pyloric sphincter

Urogenital System (pp. 169-174)

Kidney	Ovary
Oviduct	Uterus
Testis	Epididymis
Leydig's gland	Ductus deferens

Cat (pp. 343-380)

Start with chapter 36 (p. 343). Cut through the deep muscles only, not superficial and deep. Omit mesenteries. Do not bisect head as pictured in figure 37.3 on page 358. Instead, proceed as in figure 37.4, on the same page. Omit respiratory system (pp. 364-369). Continue reading through page 380.

Be able to identify the following structures and their corresponding functions:

Body Cavities and Mesenteries (pp. 343-354)

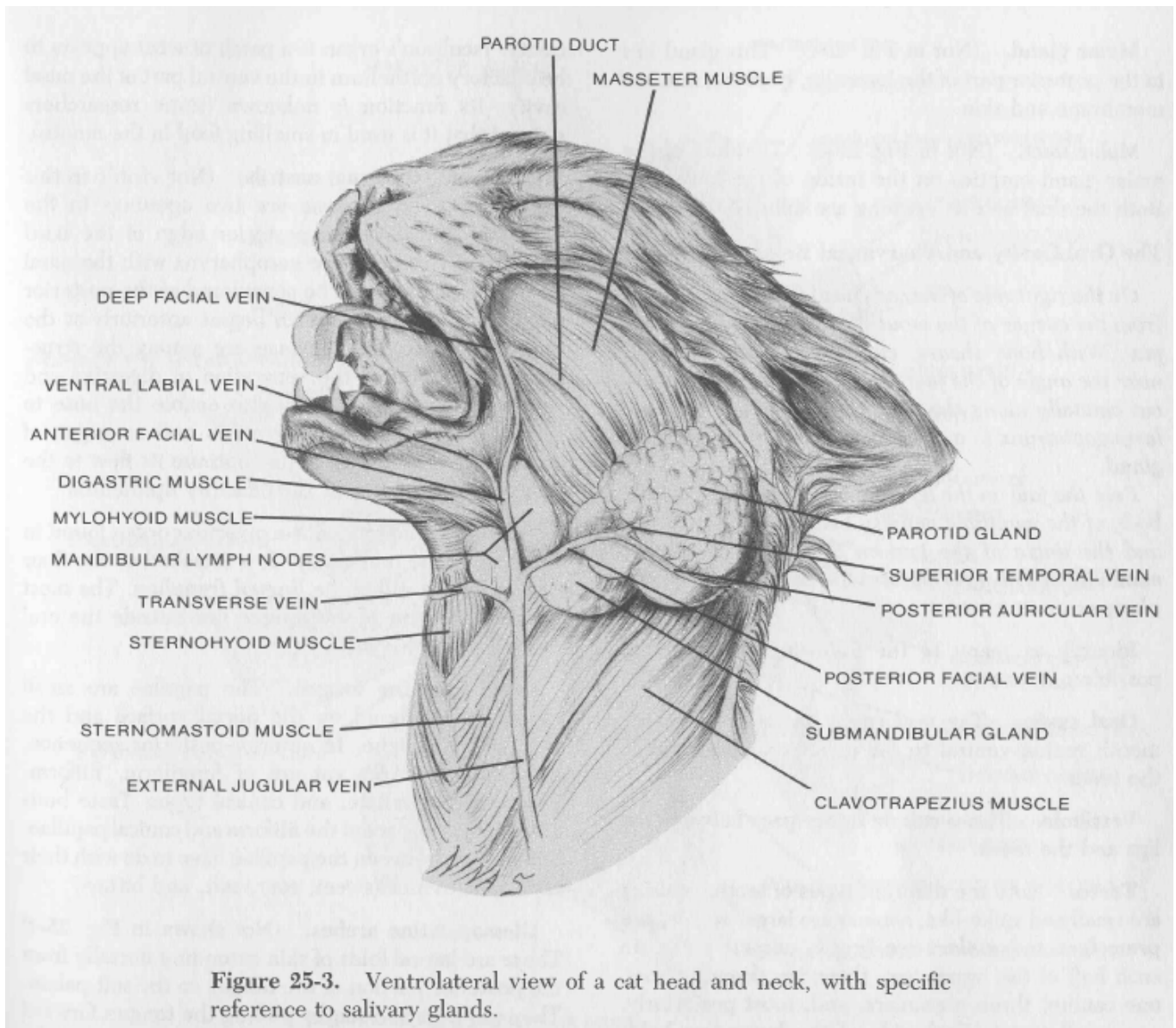
Thoracic cavity	Diaphragm
Abdominopelvic cavity	Pericardial cavity
Abdominal cavity	Pelvic cavity
Greater omentum	Lesser omentum

Digestive System (pp. 355-364)

Parotid gland	Mandibular gland
Sublingual gland	Lip
Hard palate	Soft palate
Rugae	Epiglottis
Glottis	Lingual frenulum
Filiform papillae	Fungiform papillae
Foliate papillae	Vallate papillae
Esophagus	Stomach
Pyloric sphincter	Small intestine
Duodenum	Jejunum
Ileum	Ileocecal valve
Large intestine	Cecum
Ascending colon	Transverse colon
Descending colon	Rectum
Anus	Liver
Spleen	Gallbladder
Pancreas	

Urogenital System (pp. 371-380)

Kidney	Ureter
Renal cortex	Renal medulla
Urinary bladder	Ovary
Oviduct	Uterine horn
Body of uterus	Vagina
Urethra	Clitoris
Testis	Scrotum
Penis	Glans penis



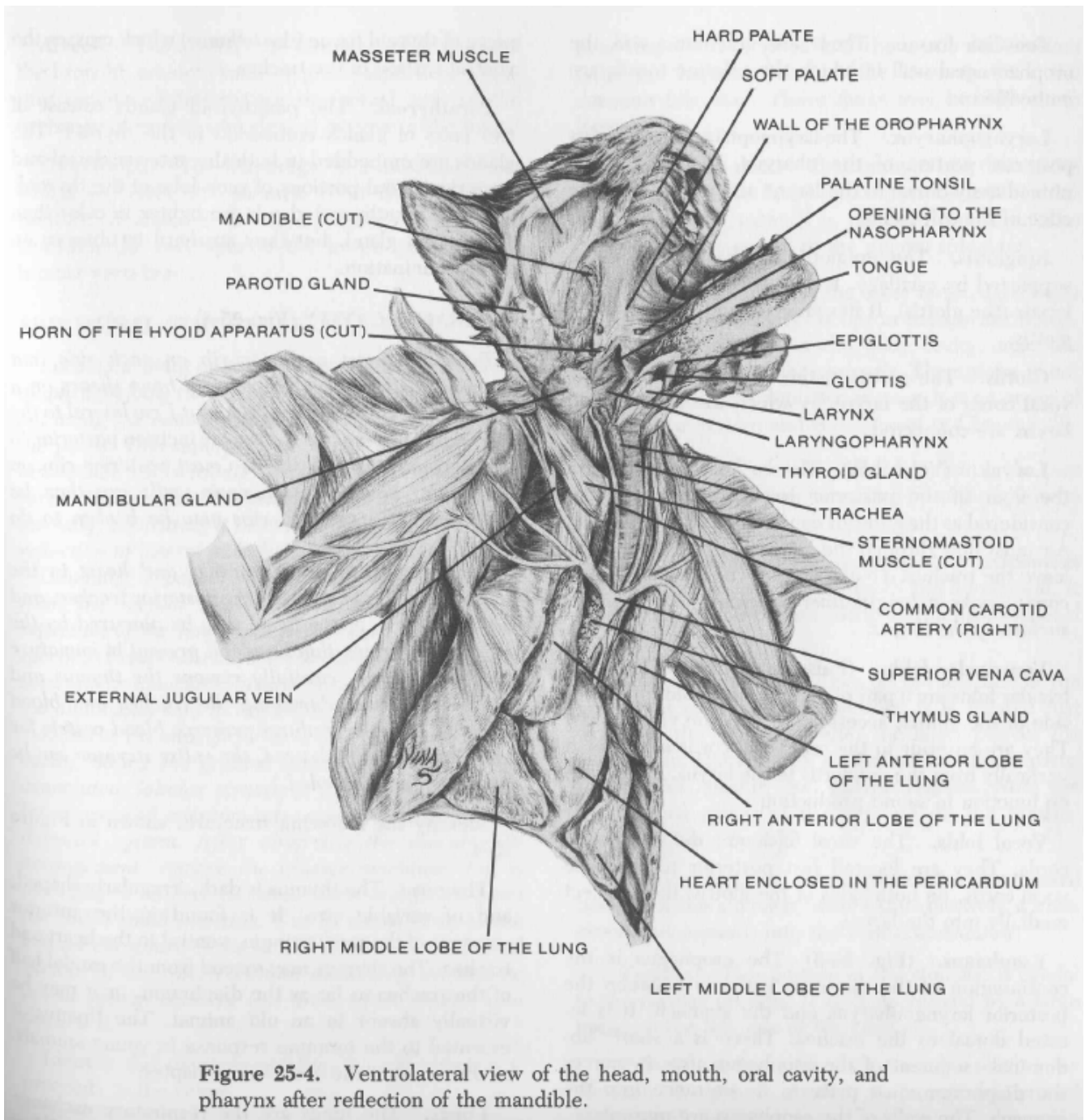


Figure 25-4. Ventrolateral view of the head, mouth, oral cavity, and pharynx after reflection of the mandible.

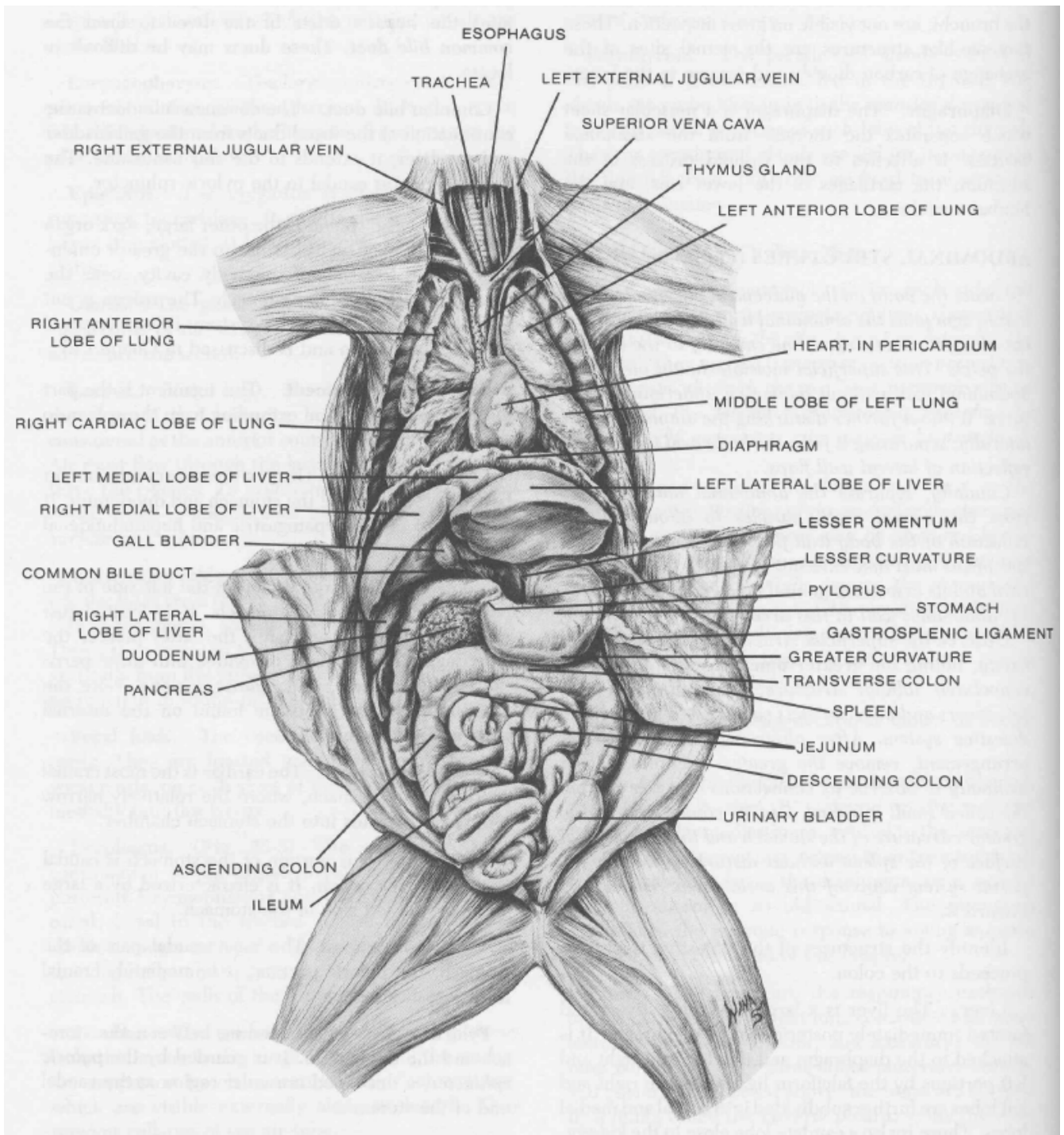


Figure 26-2. Ventral view of the abdomen of a cat, with emphasis on the structures of the male urogenital system.

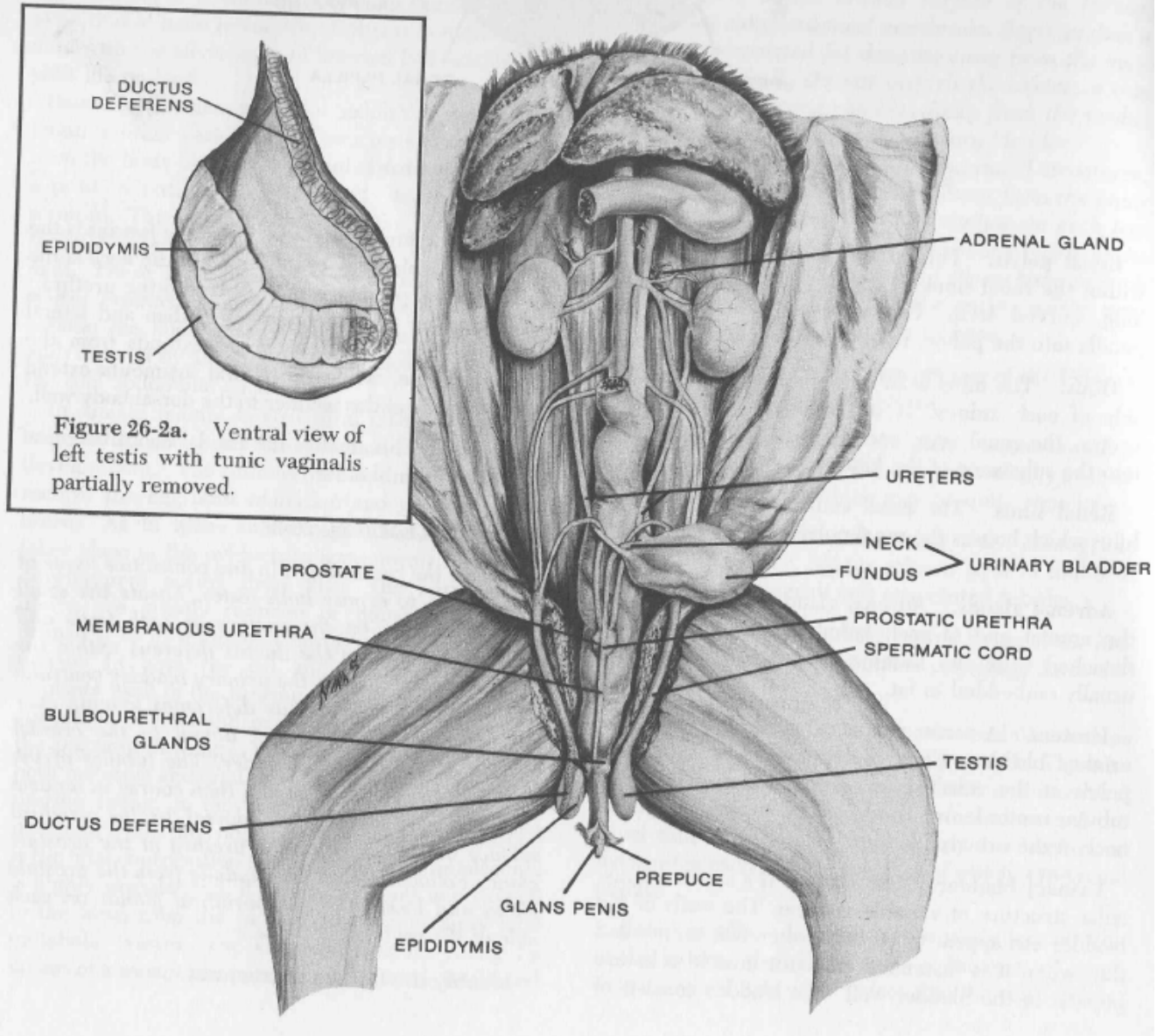


Figure 26-4. Ventral view of the abdomen of a cat, with emphasis on the structures of the female urogenital system. A gravid uterine horn is shown on the right.

