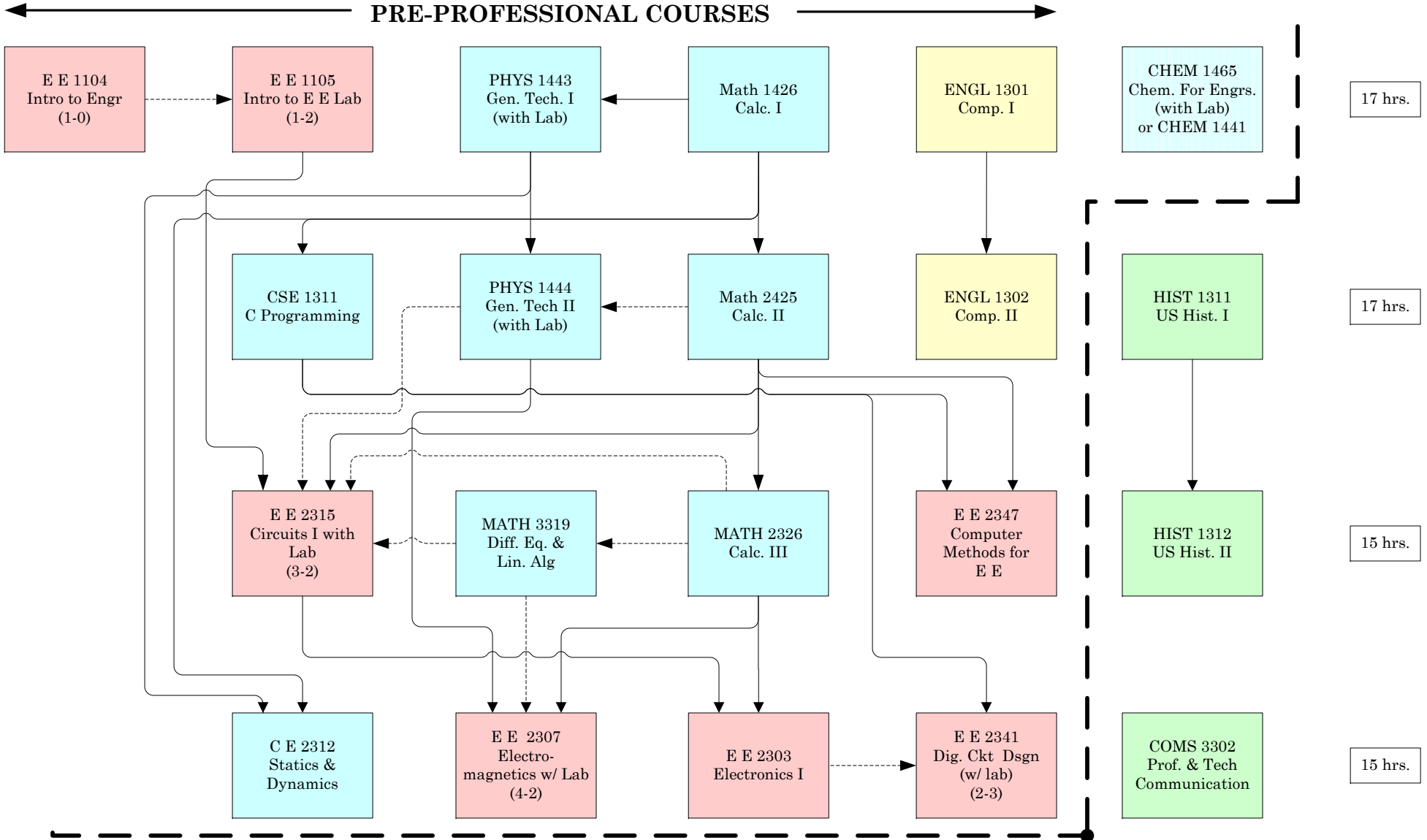


BSEE DEGREE PLAN (2010-2011 Catalog)



———▶ Prerequisite
 - - - - -▶ Prerequisite or
 Concurrent Enrollment

All courses on the left-hand side must be completed before admission to the Professional Program

Courses on the right-hand side can be taken before or after admission to the Professional Program

BSEE DEGREE PLAN (2010-2011 Catalog)

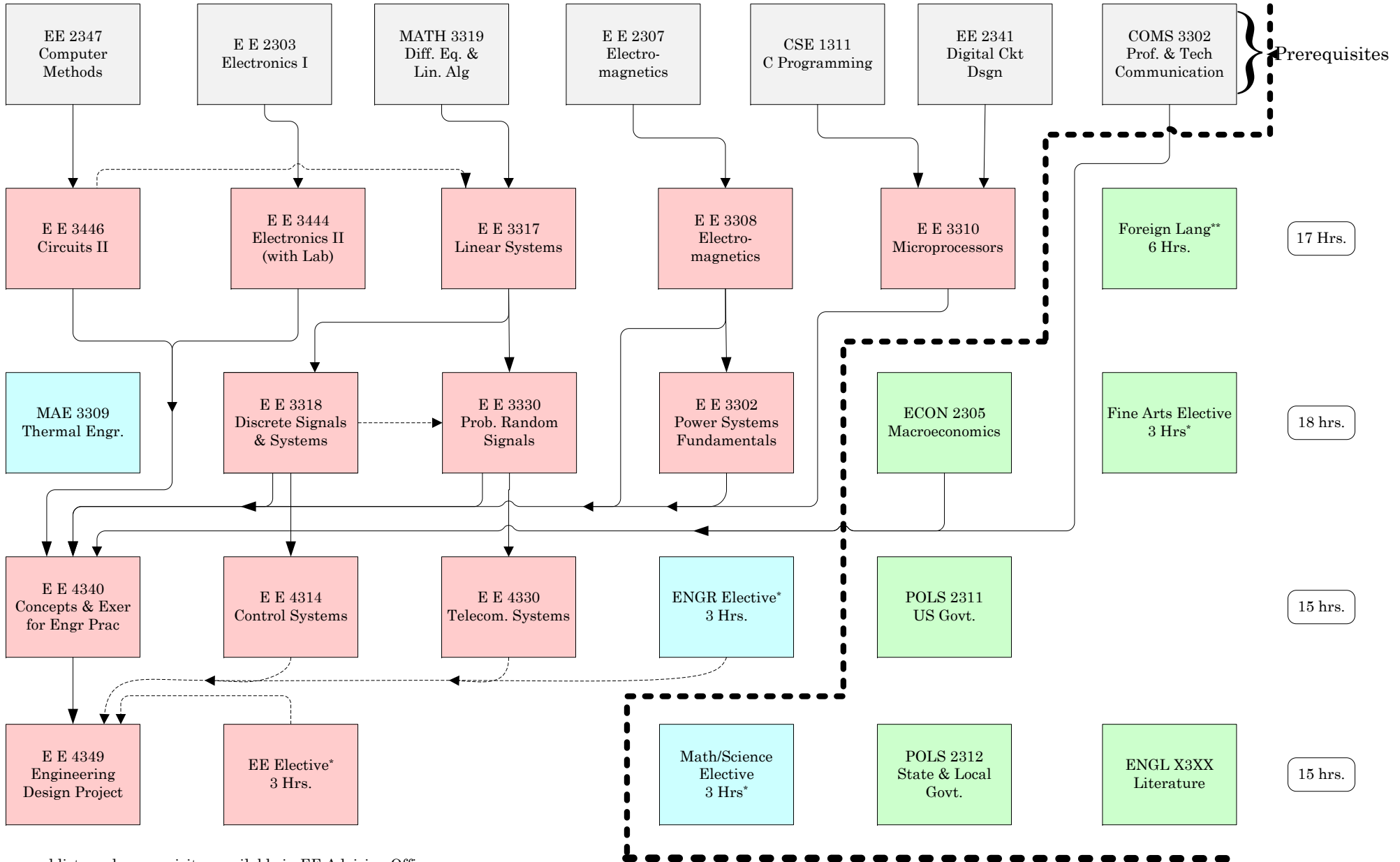
Student _____

UTA ID Number _____

EE-PROFESSIONAL COURSES

Only for students in the Professional Program
(Application form for Professional Program admission available in EE Advising Office)

**TOTAL HOURS
FOR THE BSEE
DEGREE: 129**



* Approval lists and prerequisites available in EE Advising Office

** This requirement will be waived if student has 2 High School Units of foreign language. The HS Transcript must be submitted to verify credits.

***Courses shown as co-requisite with EE4340 will likely be taken in an earlier semester.

Courses on the right-hand side can be taken before or after admission to the Professional Program