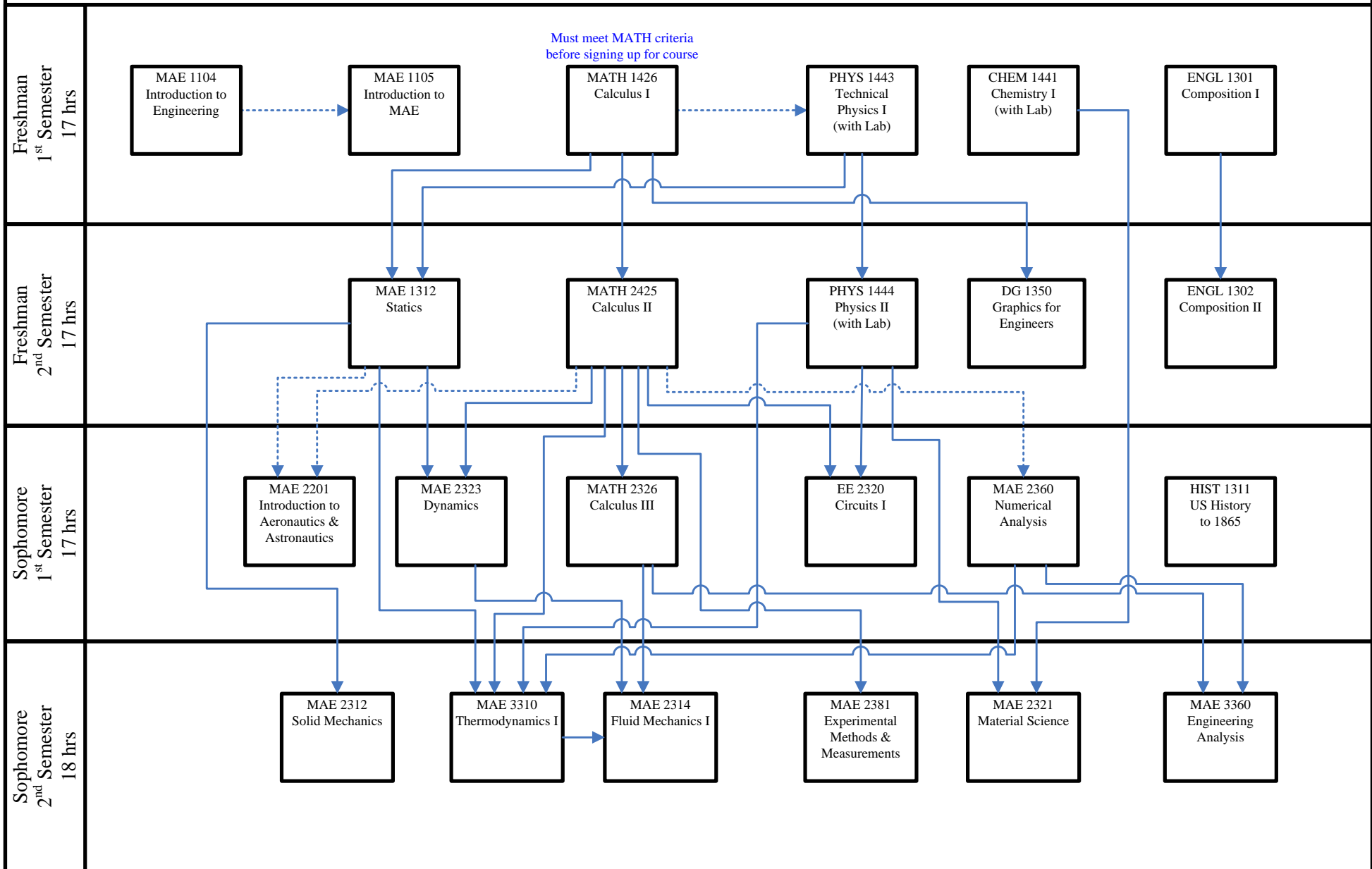


Degree Plan for Bachelor of Science in Aerospace Engineering 2005

Aerospace Engineering Pre-Professional Courses

→ Prerequisite
 - - - - - → Prerequisite or Concurrent Enrollment

Must meet MATH criteria before signing up for course



Degree Plan for Bachelor of Science in Aerospace Engineering 2005

Aerospace Engineering Professional Courses

→ Prerequisite
 - - - - - Prerequisite or Concurrent Enrollment

