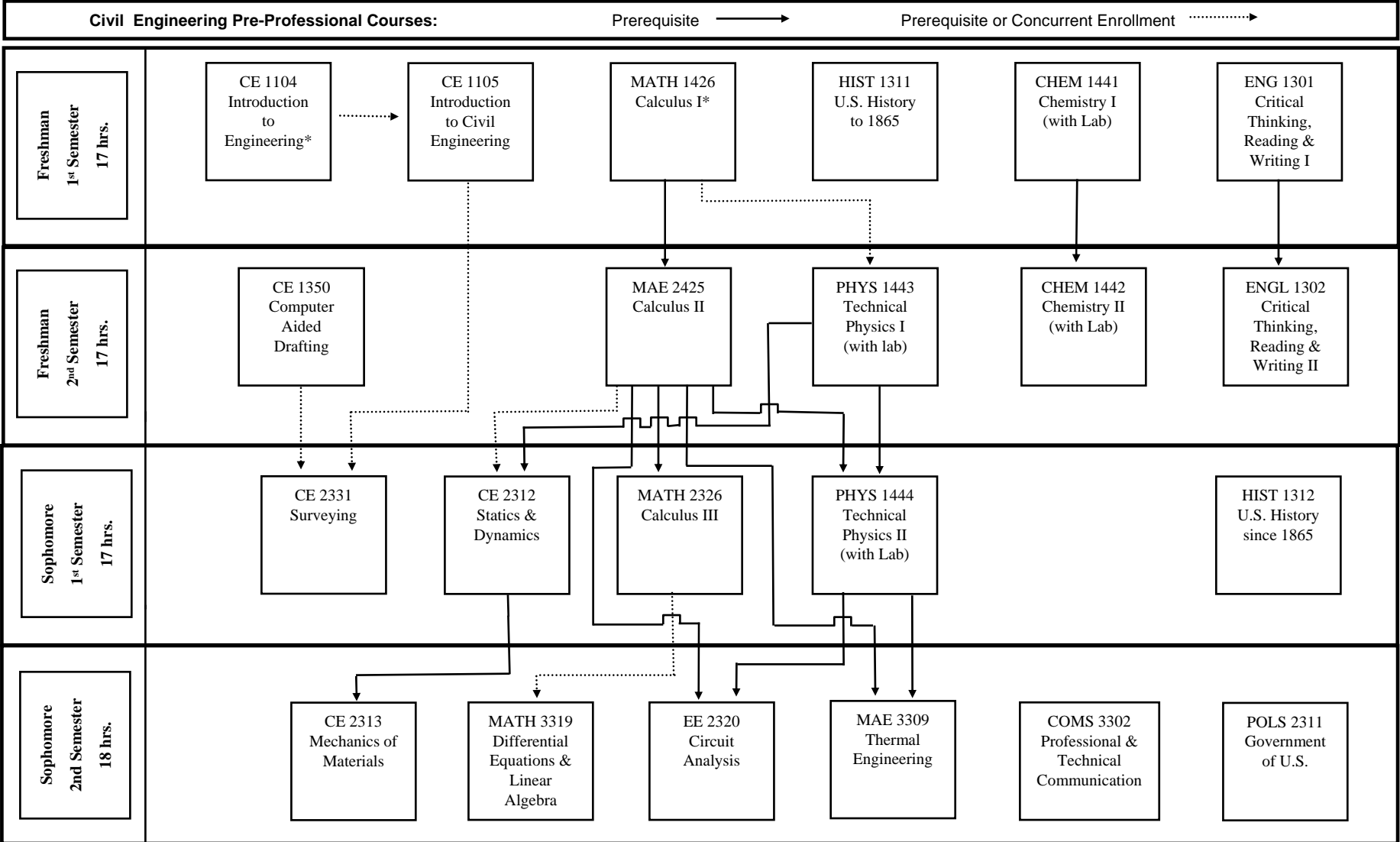


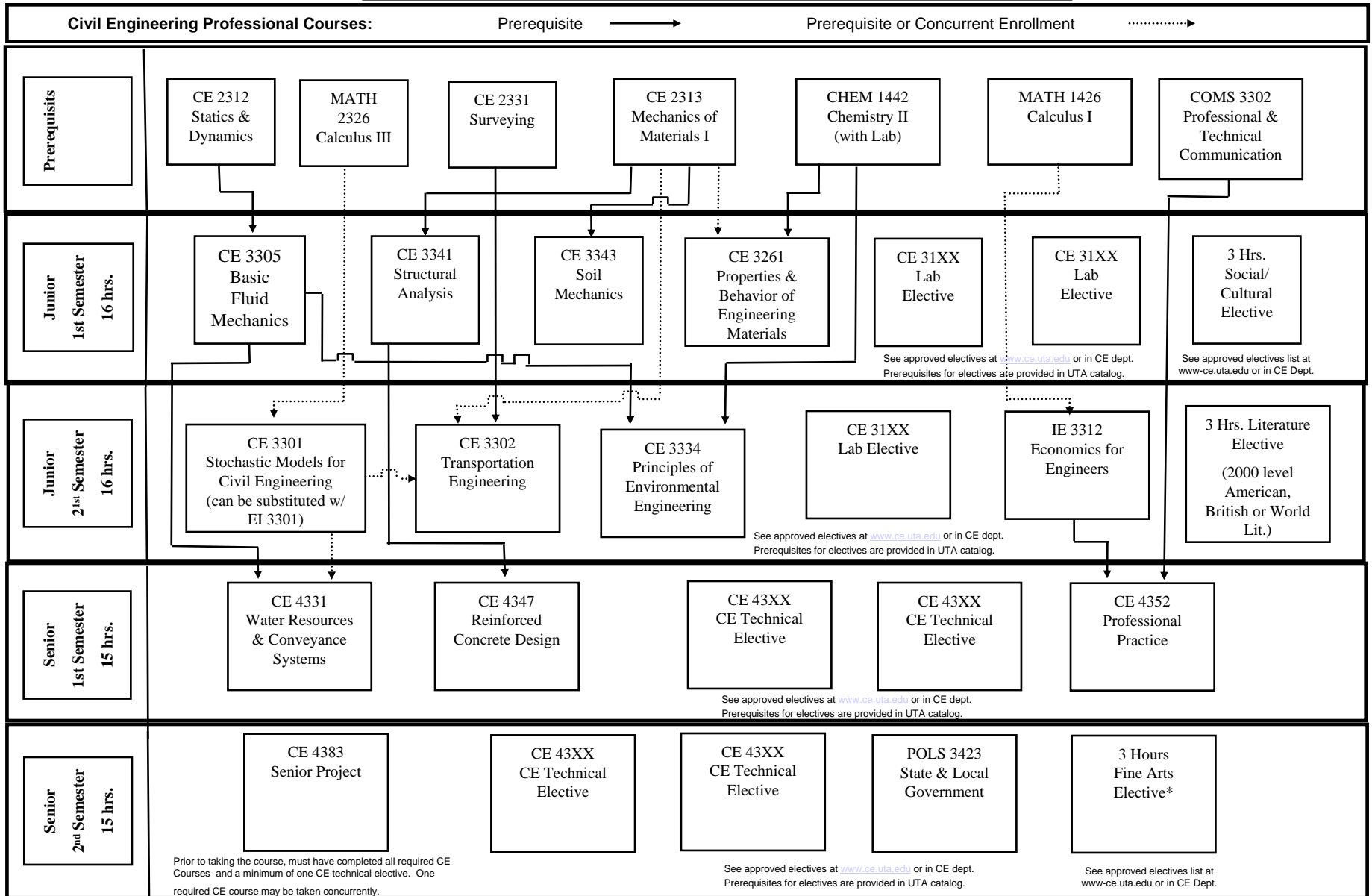
Bachelor of Science in Civil Engineering
 (This document serves as a supplement to the UTA Undergraduate 2007-08 Catalog,
 the on-line version of which is the official source of university information.)



*Must meet MATH criteria before signing up for this course.

Bachelor of Science in Civil Engineering

(This document serves as a supplement to the UTA Undergraduate 2007-08 Catalog, the on-line version of which is the official source of university information.)



Prior to taking the course, must have completed all required CE Courses and a minimum of one CE technical elective. One required CE course may be taken concurrently.

See approved electives at www.ce.uta.edu or in CE dept.
Prerequisites for electives are provided in UTA catalog.

See approved electives list at www.ce.uta.edu or in CE Dept.