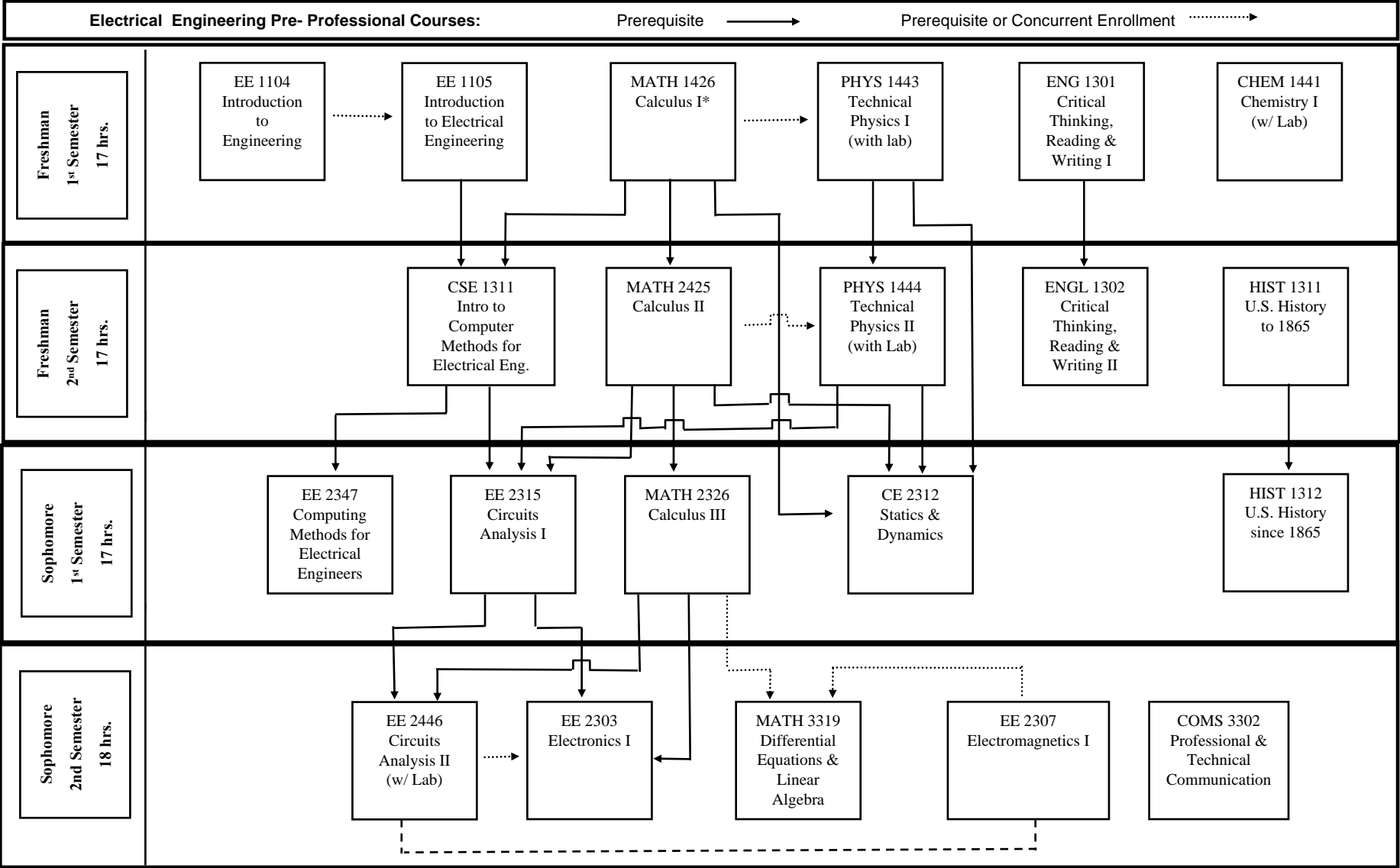


Bachelor of Science in Electrical Engineering

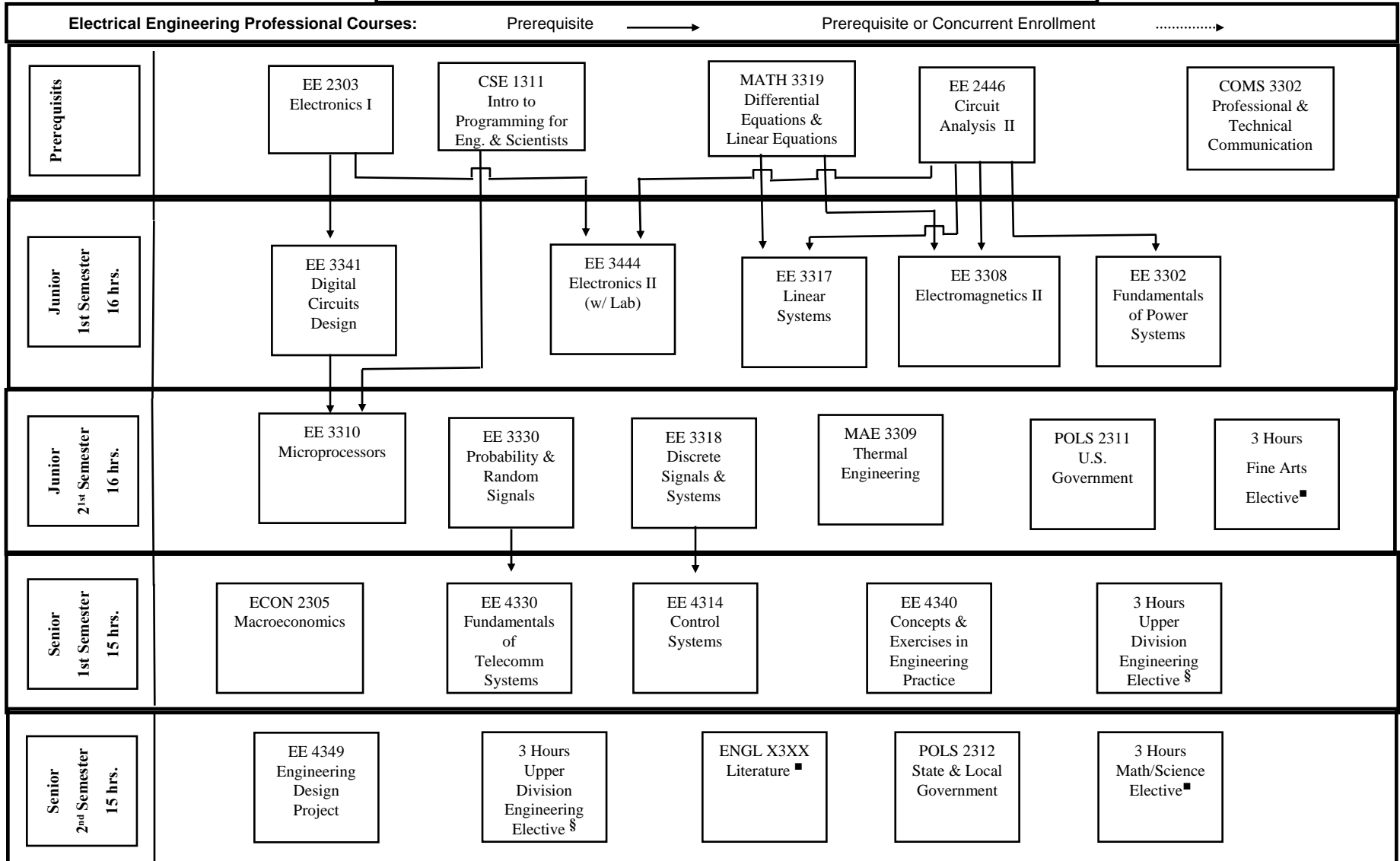
(This document serves as a supplement to the UTA Undergraduate 2007-08 Catalog, the on-line version of which is the official source of university information.)



*Must meet MATH criteria before signing up for this course.

Bachelor of Science in Electrical Engineering

(This document serves as a supplement to the UTA Undergraduate 2007-08 Catalog, the on-line version of which is the official source of university information.)



Students who do not have two units of a single foreign language in high school will be required to take two courses of a single foreign language in addition to the previously listed curriculum requirements.

■ See approved list of electives at www.uta.edu or in EE Dept., 501 NH.

§ See approved electives list at www.mae.uta.edu or in EE Dept., 501 NH.