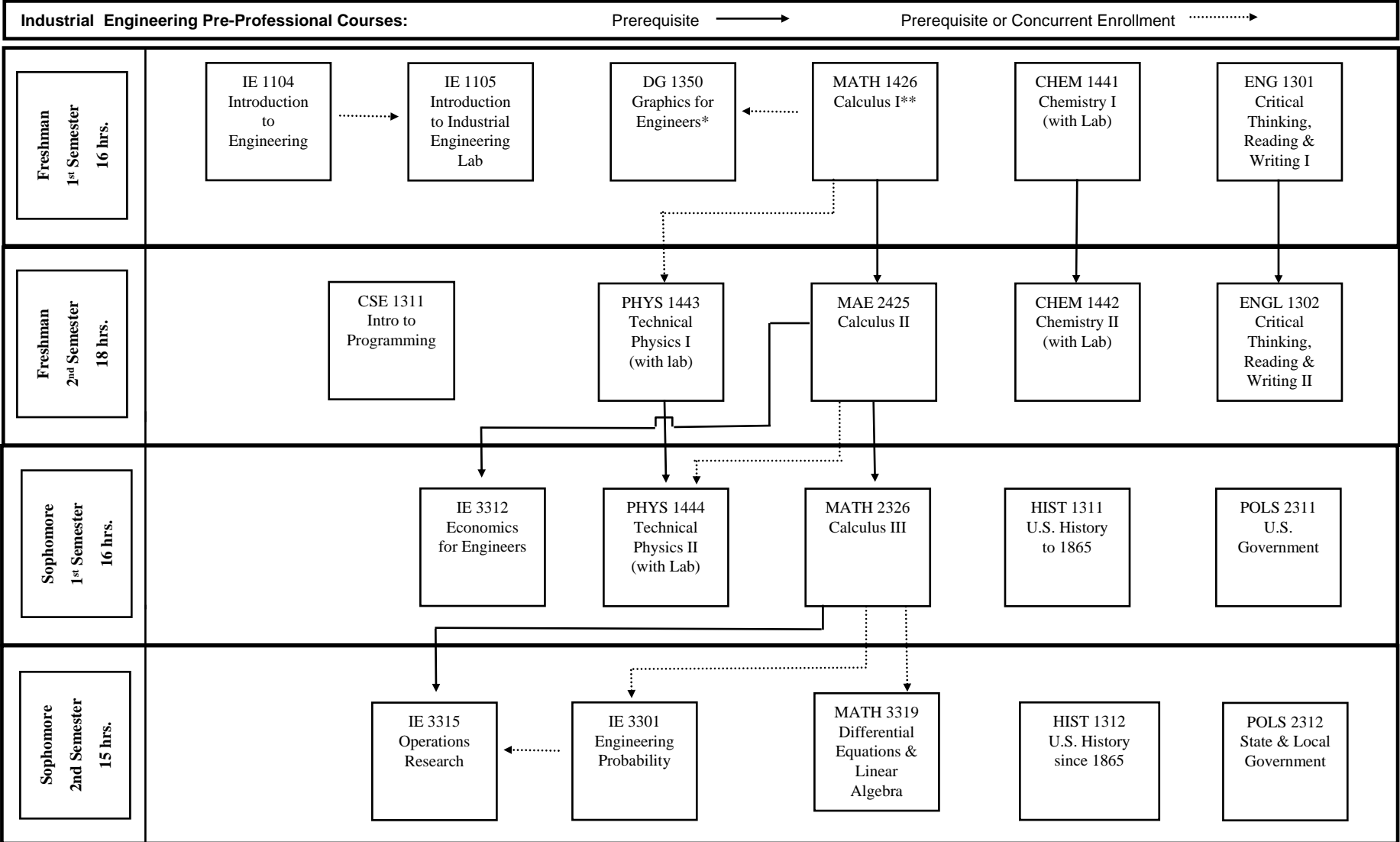


# Bachelor of Science in Industrial Engineering

(This document serves as a supplement to the UTA Undergraduate 2007-08 Catalog, the on-line version of which is the official source of university information.)

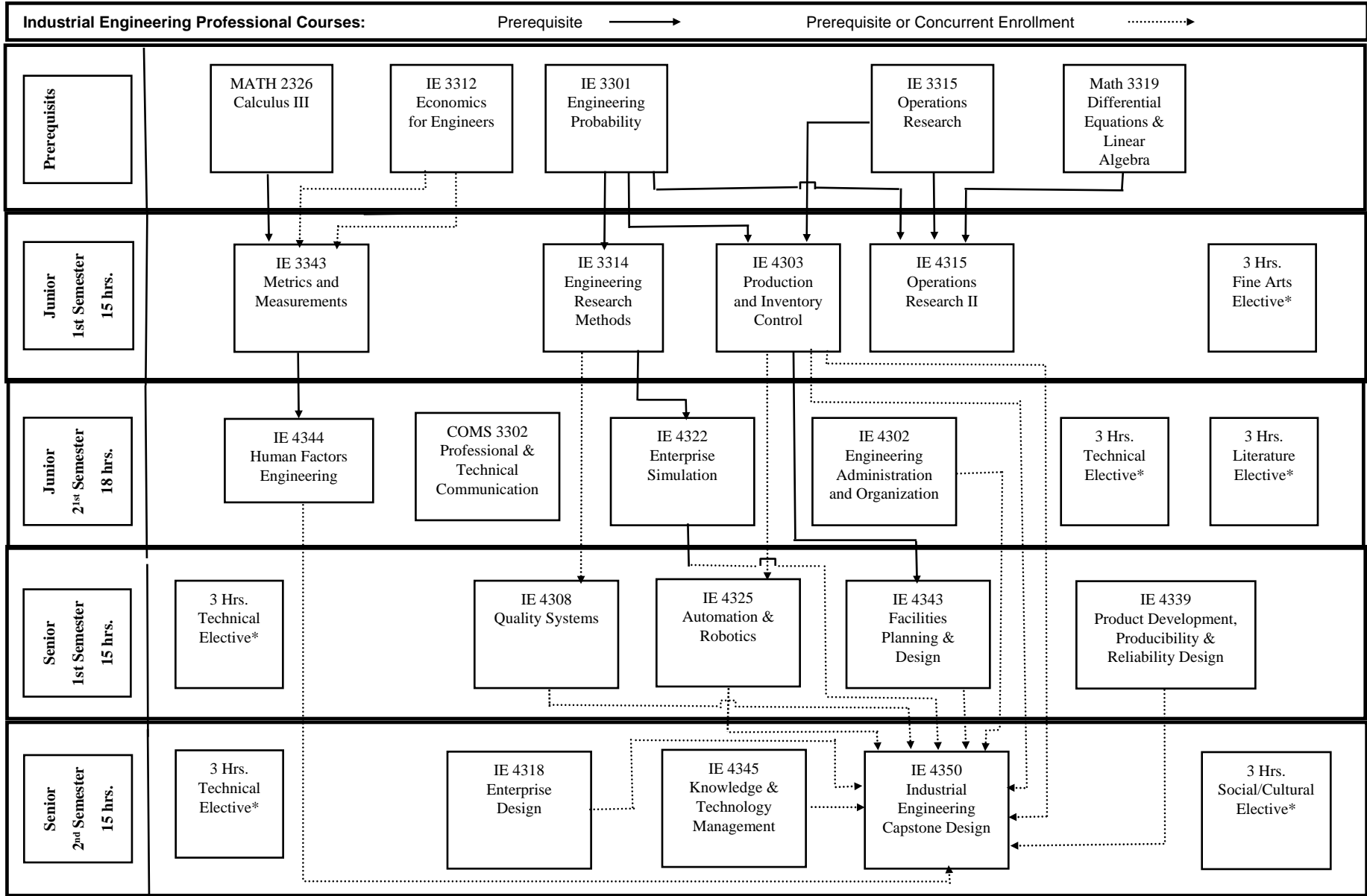


\*May substitute CE 1350.

\*\*Must meet MATH criteria before enrolling for this course.

# Bachelor of Science in Industrial Engineering

(This document serves as a supplement to the UTA Undergraduate 2007-08 Catalog, the on-line version of which is the official source of university information.)



\* See approved electives at ie.uta.edu or in IMSE Dept.  
This document is subject to revision.