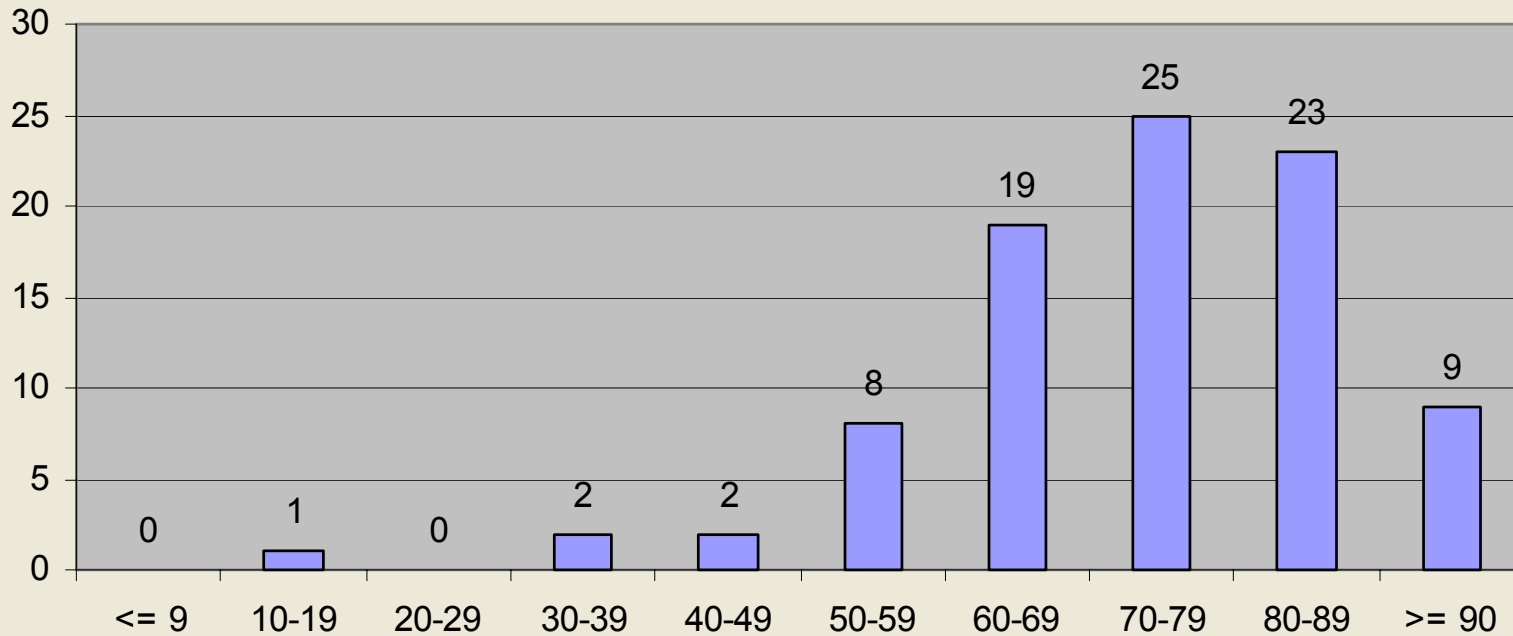
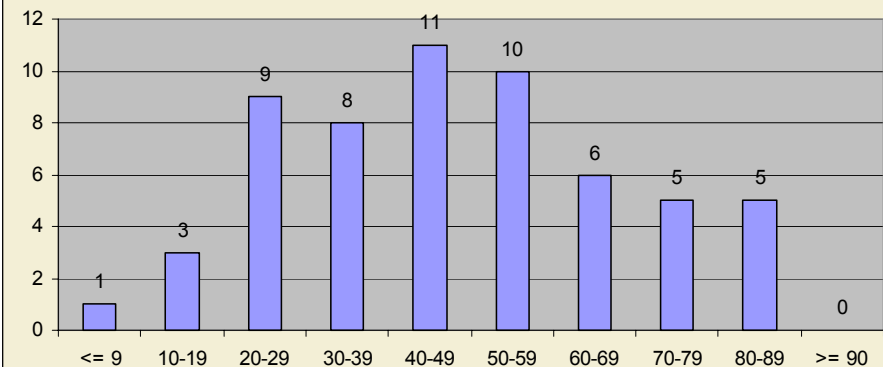


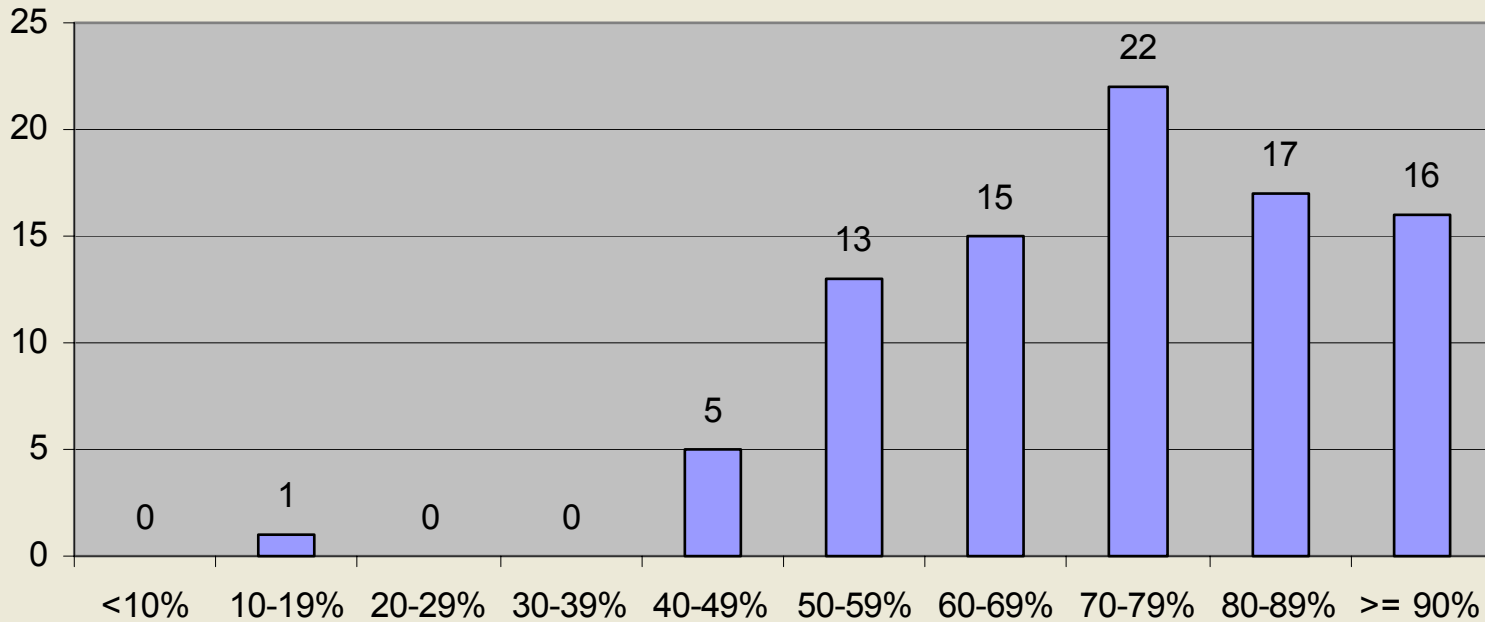
Spring 2009 Midterm 1 Total



Total (Part I + Part II)

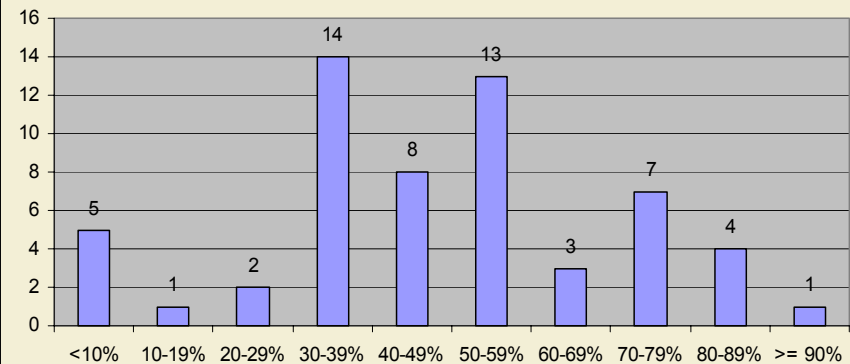


Spring 2009 Midterm 1 Part I

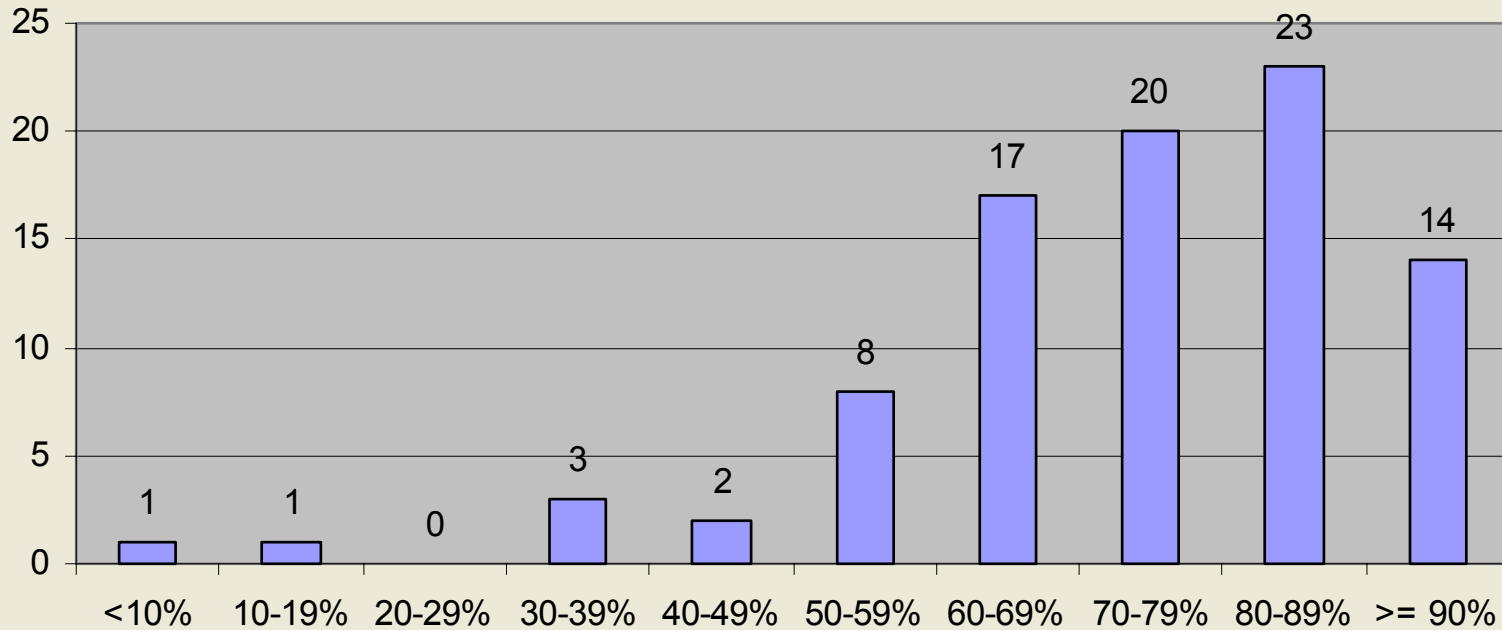


Part I: Multiple Choice (48 pts)

Spring 08

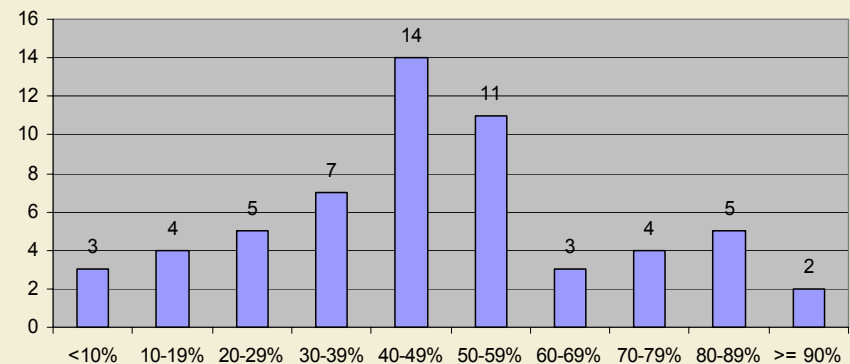


Spring 2009 Midterm 1 Part II



Part II: Show-work (52 pts)

Spring 08



Exam Grade	Midterm 1	Midterm 2	Final	Other	Estimated Grade
	20%	25%	35%	20%	
90	-2	-2.5	-3.5	-1	91
80	-4	-5	-7	-1	83
70	-6	-7.5	-10.5	-1	75
60	-8	-10	-14	-1	67
50	-10	-12.5	-17.5	-1	59
40	-12	-15	-21	-1	51
30	-14	-17.5	-24.5	-1	43
20	-16	-20	-28	-1	35
10	-18	-22.5	-31.5	-1	27