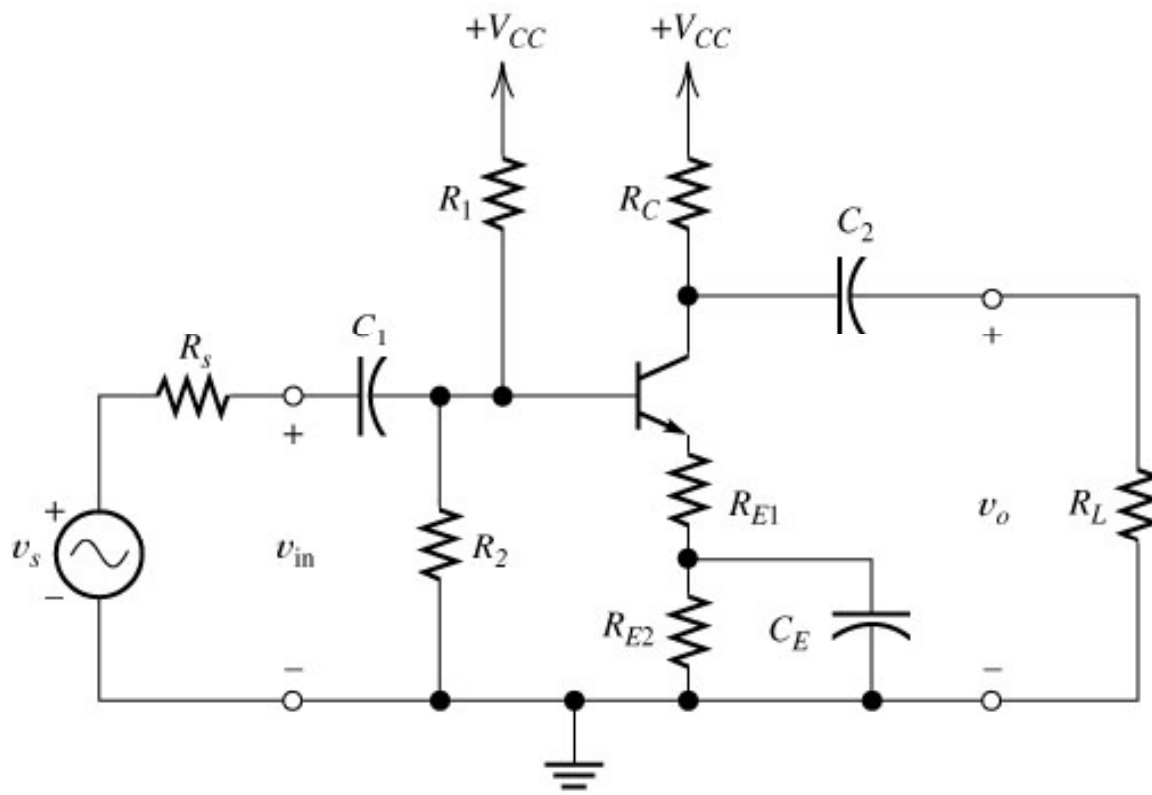
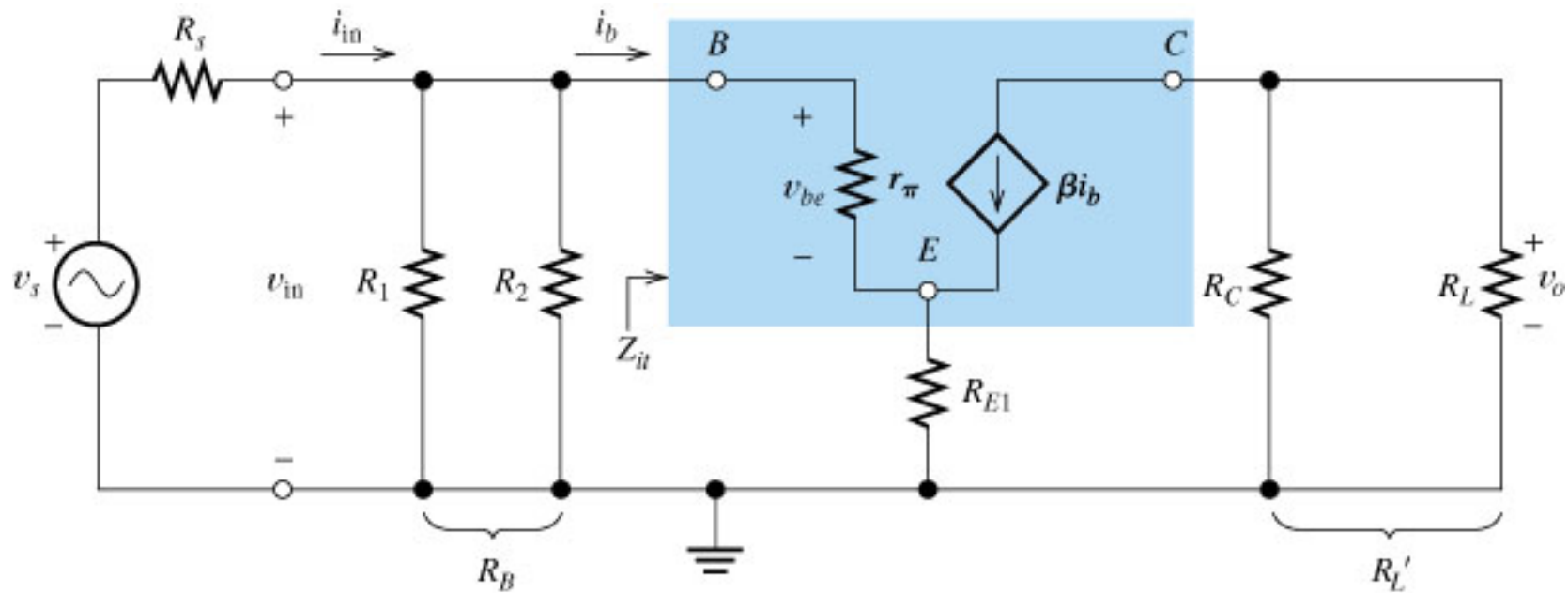


Lecture 20
EE 2303/001-Electronics I
April 6, 2009

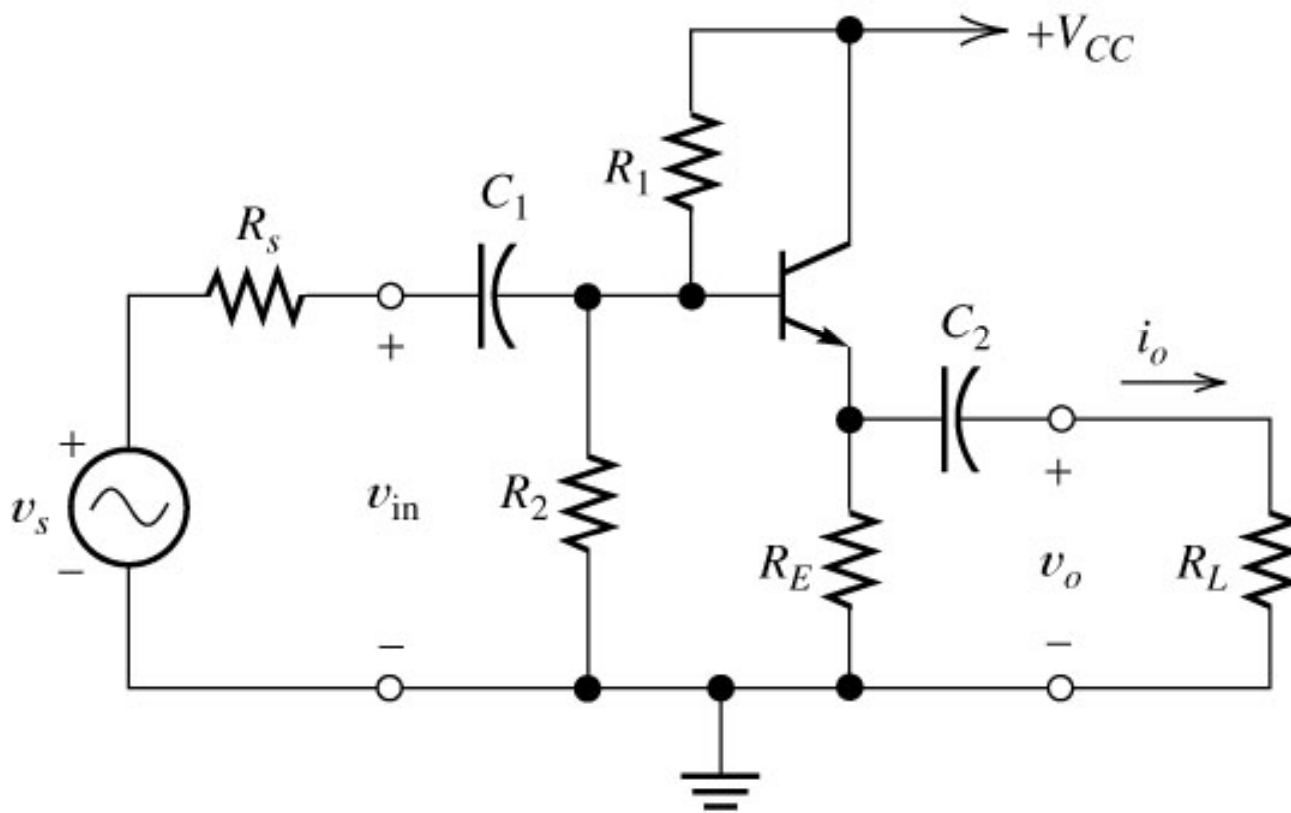
Professor Ronald L. Carter
ronc@uta.edu
<http://www.uta.edu/ronc/>



(a) Actual circuit

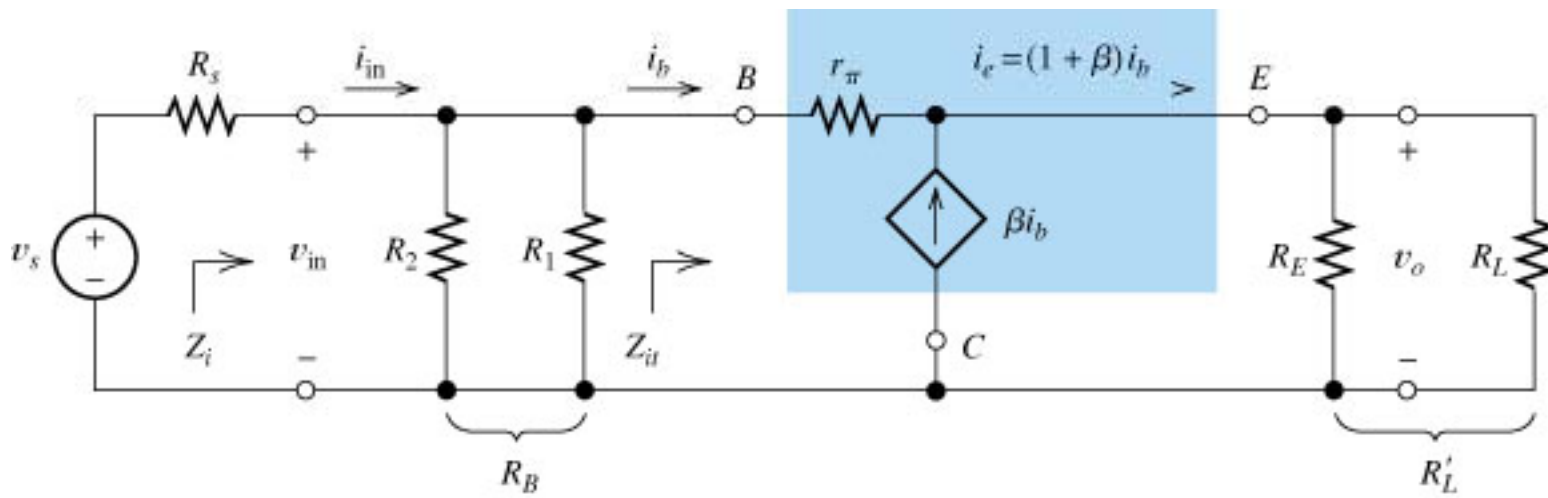


(b) Small-signal midband equivalent circuit



(a) Actual circuit

Figure 4.36a Emitter follower.



(b) Small-signal midband equivalent circuit

Figure 4.36b Emitter follower.

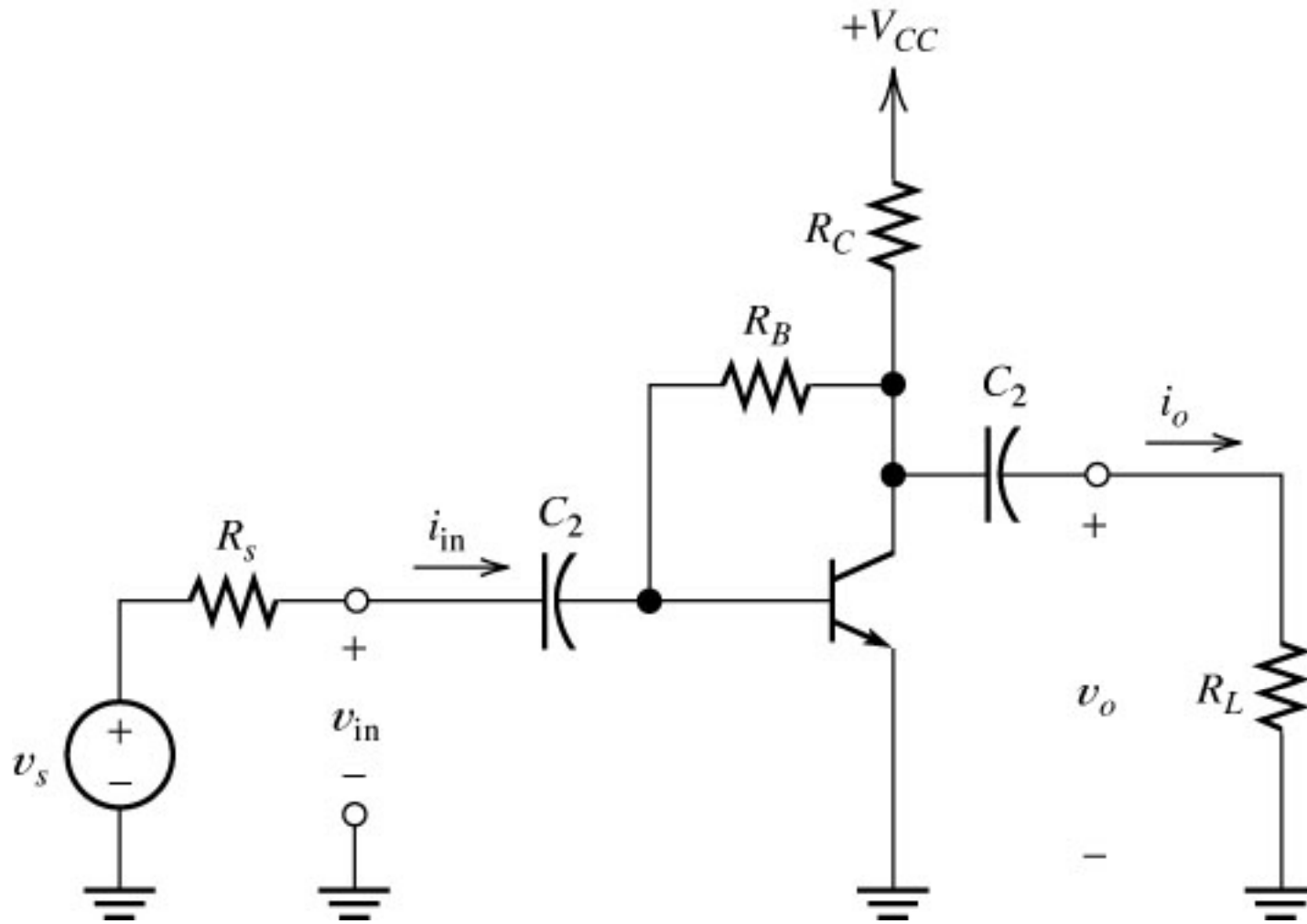


Figure 4.39 Variation of the common-emitter amplifier.

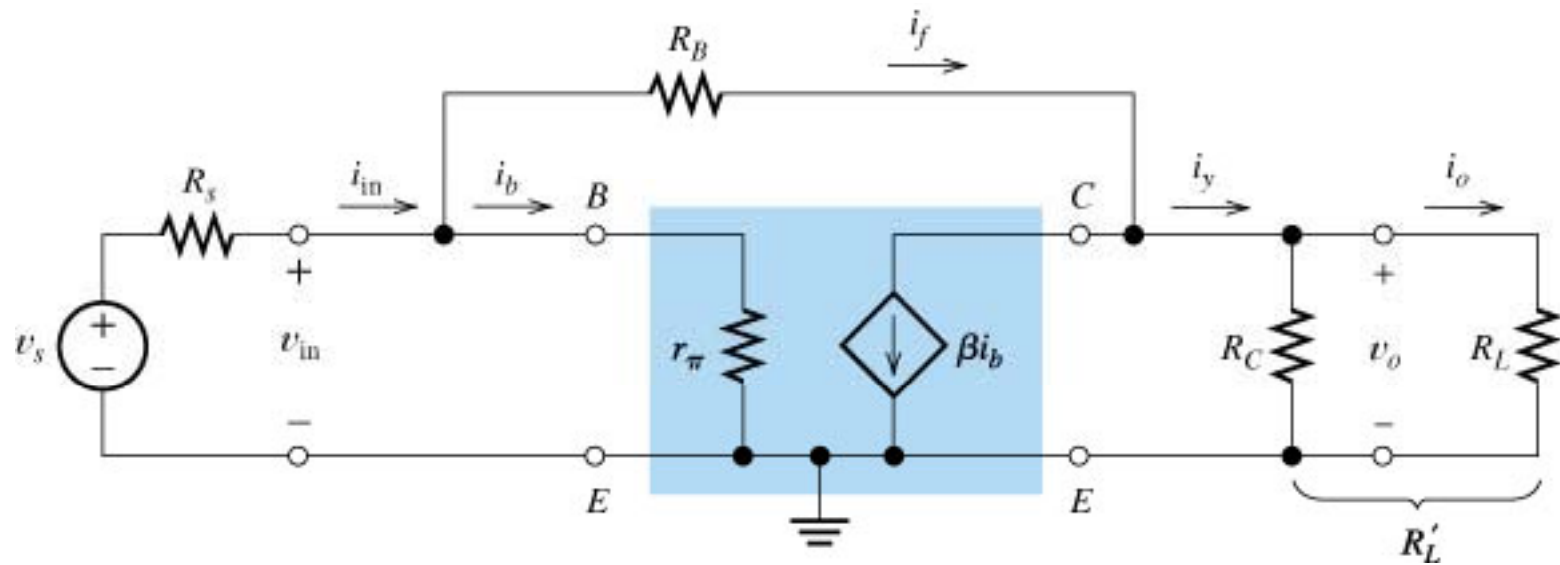


Figure 4.40 Small-signal equivalent circuit for the amplifier of Figure 4.39.

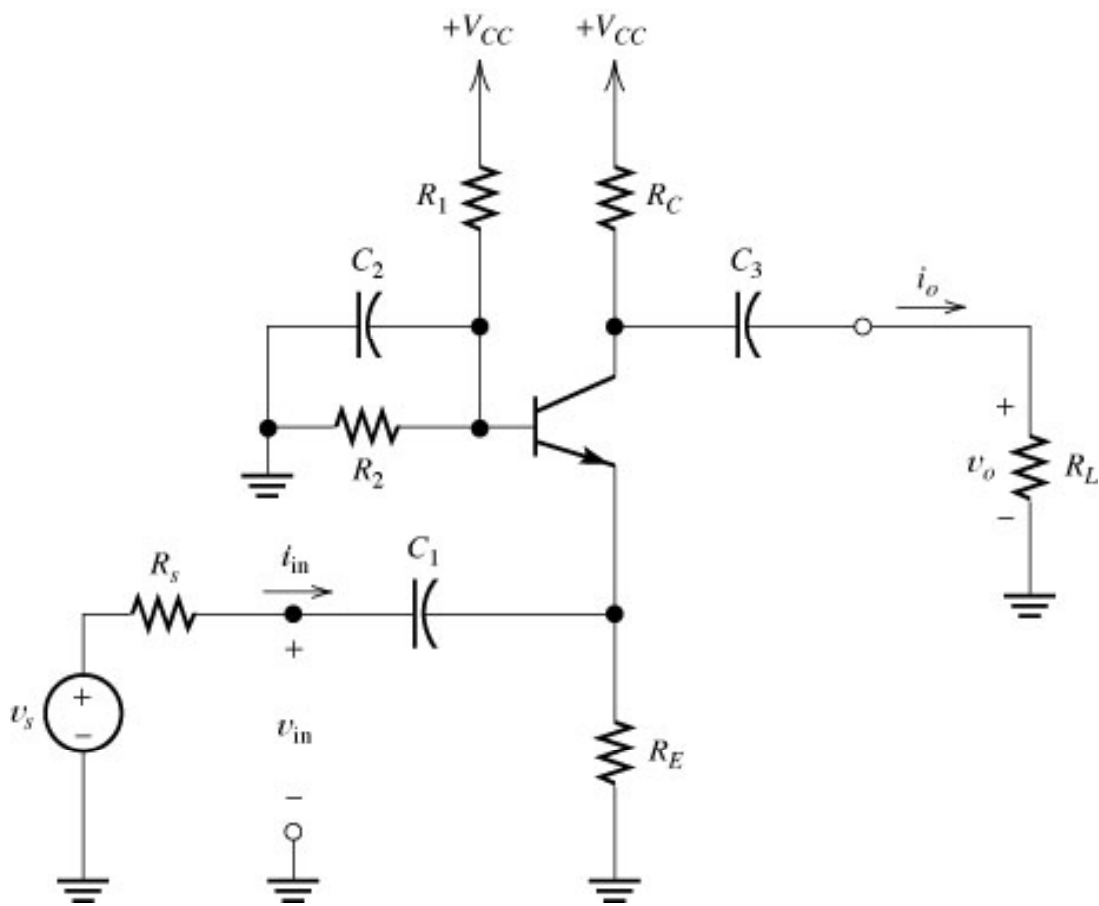


Figure 4.38 Common-base amplifier.

References and Endnotes

- Where not otherwise noted, figures with a figure number (e.g., Fig 3.2) are taken from:
 - Electronics, 2nd edition, by Allan R. Hambley, Prentice Hall, Upper Saddle River, NJ, © 2000.