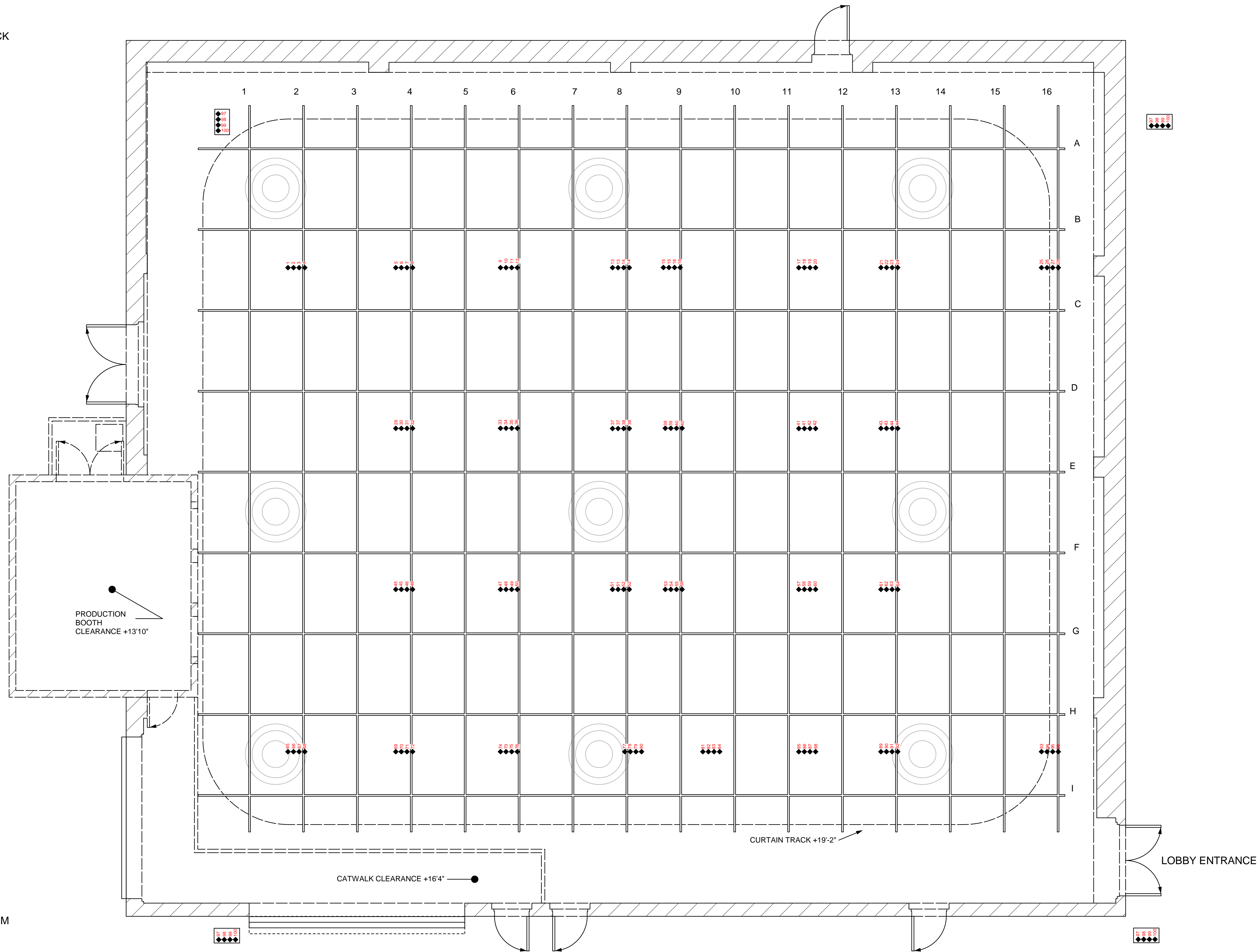


SOFT GOODS SUMMARY:

26 BROWN LEGS 18'-10X8'-0" ON CURTAIN TRACK
 10 BROWN LEGS 19'-3"X8'-0" WITH TIES



NOTES:

- AIR CONDITIONING DUCTS +18'-9 1/2"
- GRID HEIGHT +19'-3 1/2"
- CURTAIN TRACK GOES AROUND THE ENTIRE ROOM
- ARRANGEABLE SEATING PLATFORMS
- CIRCUITS 97-100 AT +28 1/2" FROM FLOOR

THE UNIVERSITY OF TEXAS AT ARLINGTON		DRAWING # 1 OF 1
GROUNDPLAN		
DIRECTOR:	TECHNICAL DIR:	APPROV:
DESIGNER:	DRAFTER:	
DATE:	SCALE: 1/4" = 1'-0"	